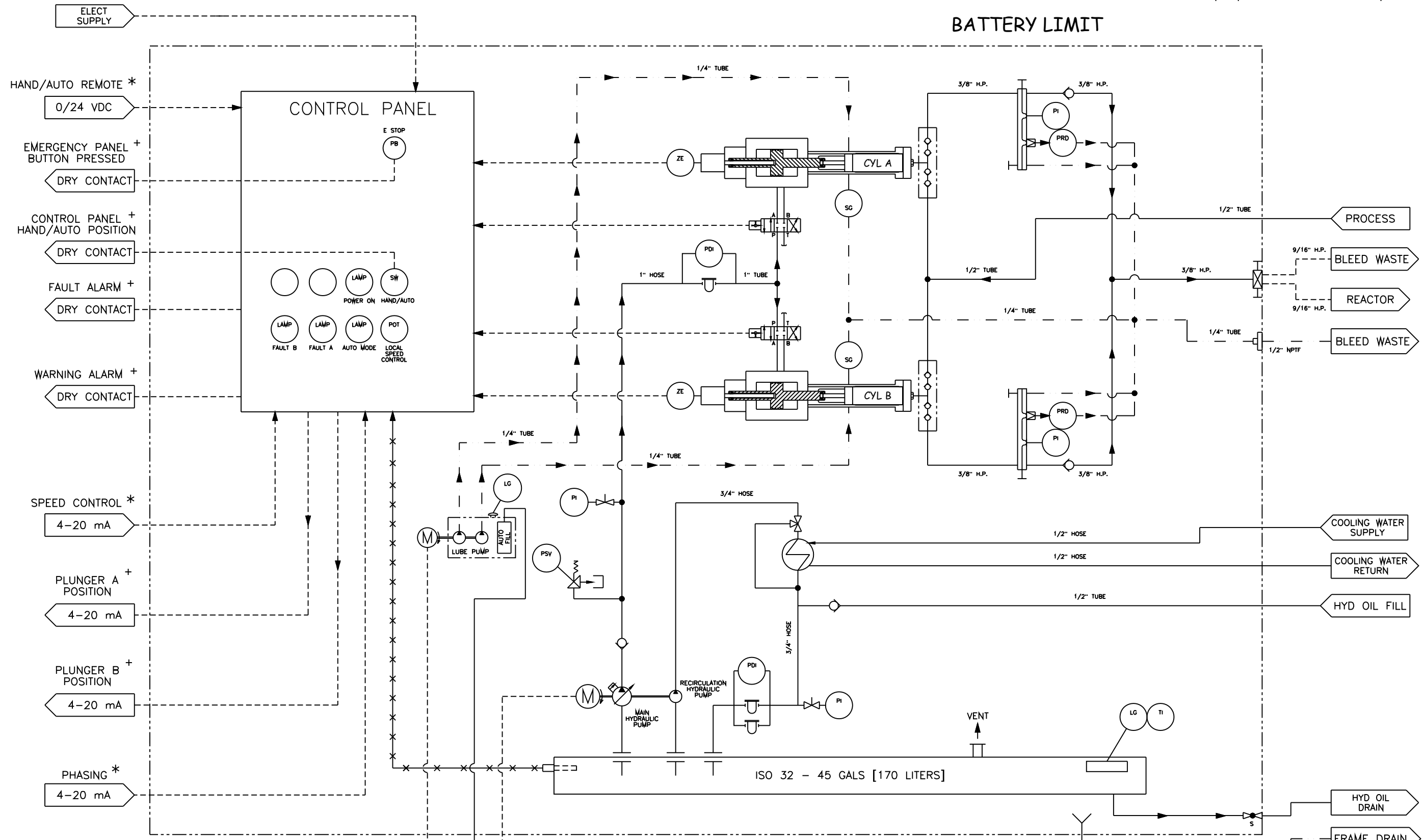


REVISIONS			
NO	DESCRIPTION	DATE	APPROVED



- RECOMMENDED CONNECTIONS  
 \* REQUIRED CONNECTIONS

OPTIONAL AUTO FILL

Copyright © 2003  
 KMT Waterjet Systems  
 All Rights Reserved

**WARNING !**  
 The export or re-export of this drawing or a product produced by this drawing is subject to U.S. Export Administration regulations and other applicable governmental restrictions or regulations.

**PROPRIETARY NOTICE**  
 This document contains confidential and trade secret information, is the property of KMT Waterjet Systems, and is given to the receiver in confidence. The receiver by reception and retention of the document accepts the document in confidence and agrees that, except as authorized in writing by KMT Waterjet Systems, it will (1) not use the document on any copy thereof or the confidential or trade secret information therein; (2) not copy the document (3) not disclose to others either the document or the confidential or trade secret information therein; and (4) upon completion of the need to retain the document, or upon demand return the document, all copies thereof, and all material copied therefrom.

**STANDARD TOLERANCES**  
 UNLESS OTHERWISE NOTED:  
 ALL DIAMETERS ON COMMON CENTERLINE COAXIAL TO .005  
 BREAK SHARP EDGES AND CORNERS .015  
 SURFACE FINISH - ✓  
 X.X = ±.063  
 X.XX = ±.015  
 X.XXX = ±.005  
 ANGLE = ±2°

**GD&T TO ASME Y14.5M 1994**  
 ALL DIMENSIONS IN INCHES [mm]  
 MATERIAL -  
 HEAT TREAT -  
 HARDNESS -

REF. DWG 20463273D  
 DRAWN BY & DATE B WEIBEL 3/3/11  
 CHECKED BY & DATE FRED T. 3/3/11  
 ENG. APPROVAL & DATE FRED T. 3/3/11

**KMT**  
 McCartney Products

TITLE PF - I - P & ID

DWG. NO. L-001322 REV. 0

SCALE: - TITLE BLOCK REVISION: 1 SHEET 1 OF 1