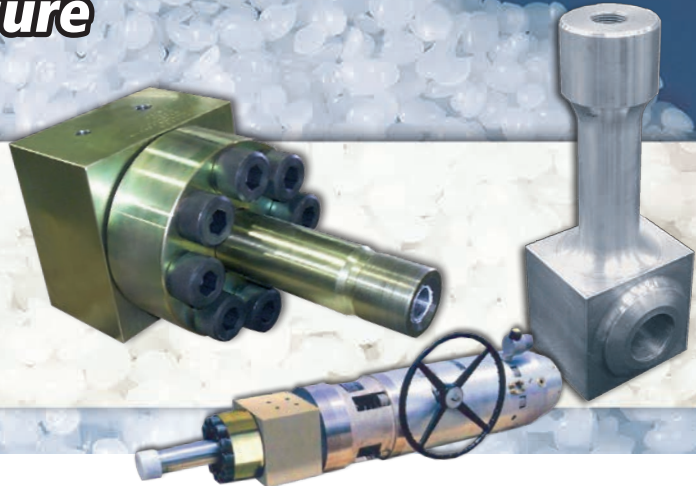


McCartney LPDE Valves & Components

Precision Under Pressure



The engineers, designers and technicians at KMT Waterjet & McCartney Products have the experience and resources to develop innovative solutions to address your specific process equipment issues.

LUBRICATION & CATALYST FEED:

INLINE POPPET CHECK VALVE

Poppet check valve designed to address the "hotcheck" problem common to many hyper compressor lubrication systems. Other applications may include catalyst/modifier delivery lines and reactor entry points.



BLOCK CHECK VALVE

The McCartney Block Check Valve is a poppet design in-line valve available with removable seat and can be configured to meet specific process, mechanical, and material requirements for pressures up to 60.000 PSI (4.138 Bar).



HIGH SPEED VENT VALVE

McCartney High Speed Vent Valves combine the 2-piece McCartney vent valve design and pneumatic actuator with external manifold and oversize solenoid valve. The unique pneumatic actuator design allows for "stacking" of the 12" diameter pistons up to a total of six, reducing spare parts inventory.



LETDOWN & RECYCLE SERVICE:

PROCESS CONTROL VALVE

Process Control Valves (PCV) are manufactured from selected heat-treated alloy steel forgings. Valve body and trim designs are furnished to meet customer specifications for particular service. Available pressure ranges are 5.000 to 75.000 PSI. Valves furnished with Electro-hydraulic or Pneumatic operators for precise control.



SHUT-OFF & SAFETY SERVICE:

HIGH PRESSURE ANGLE VALVES

Valves are manufactured from selected heat-treated alloy steel forgings. Valve body and trim designs are furnished to meet customer specifications for particular service. Available pressure ranges are 5.000 to 75.000 PSI. Gear Driven, Pneumatic and Hydraulic actuators are available.



DUAL LET DOWN/VENT VALVE

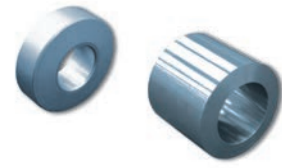
This unique design configuration combines the Let Down and Vent Valve, allowing for a very compact and efficient valve package. The dual valve design reduces the length of "dead leg" gas to an absolute minimum, greatly reducing related problems such as gas degradation in that area. Available pressure ranges are 5.000 to 75.000 PSI.



RINGS/INJECTION/STRAINER:

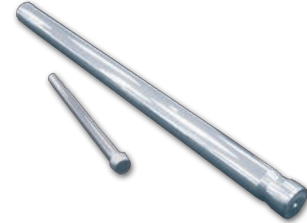
LENS & CONE RINGS

Cone Ring and Lens Ring gaskets can be fabricated in any size according to customer specifications, or we can design the parts to suit your working conditions. Materials will be selected per customer specifications or according to the specific application.



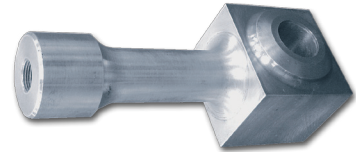
PLUNGERS

McCartney has full carbide plunger fabrication capabilities to grind and finish a wide variety of plungers from 250" – 4.00" (6.4 mm – 101 mm). Using Ke-nametal™ carbide blanks, we commonly grind and polish plunger OD surfaces to 1-2 RMS finish. We also provide O.D. regrind and polish service for worn plungers of all sizes.



THERMOCOUPLE/INJECTION

McCartney will design and fabricate Thermocouple and Injection Lens Rings and Cone Rings in a variety of configurations. These include the full flange design shown above, as well as the "Dogbone" design, and of course the basic ring with thermocouple silver soldered in place.



LINE STRAINERS

KMT McCartney can design and provide line strainers of any size to fit your working conditions, eliminating larger debris from your system before causing major problems down line. Materials will be selected per customer specifications or according to the specific application.



SERVICE AND OTHER PRODUCTS

Improved Designs for competitors existing equipment.

Work is ongoing to improve on existing designs of McCartney equipment as well as our competitors equipment. Contact us for details.

Stud Tensioning

Hydraulic Stud Tensioner provides a safe, easy and accurate method of pre-stressing large diameter stud bolts.

Design of high-pressure components

Autofrettaging and custom fabrication are available to suit individual needs.

Complete shop security

Permits execution of secrecy agreements to protect special designs you may desire to have made in our shop.



McCartney Products

USA World Headquarters (Main Office for North and South America, Australia, Japan and Korea)

635 W. 12th Street • P.O. Box 231 • Baxter Springs, KS 66713
Tel.: 1-620-856-2151 • Fax: 1-620-856-5050

www.kmtldpe.com • poly.sales@kmtwaterjet.com

KMT GmbH - KMT Waterjet Systems

Germany & China (Main Office for Europe, Middle East, Africa, Asia, Thailand and Vietnam)

Auf der Laukert 11 • D-61231 Bad Nauheim Germany
+49-6032-997-0

www.kmtldpe.com • info@kmt-mccartney.com